

# LoTAG Group & Smart Cities Conference

Department for Transport Update (May 2018)





# Sector Moving Forward

## 1. INTRODUCTION TO ASSET MANAGEMENT



### > THE IMPORTANCE OF THE ROAD NETWORK

PRODUCED BY ATKINS

The local highway network (LHN) is a critical national asset that forms the majority of the road network, and is the single most valuable asset owned by virtually all local authorities.

The LHN is vital to the economy and wider society.

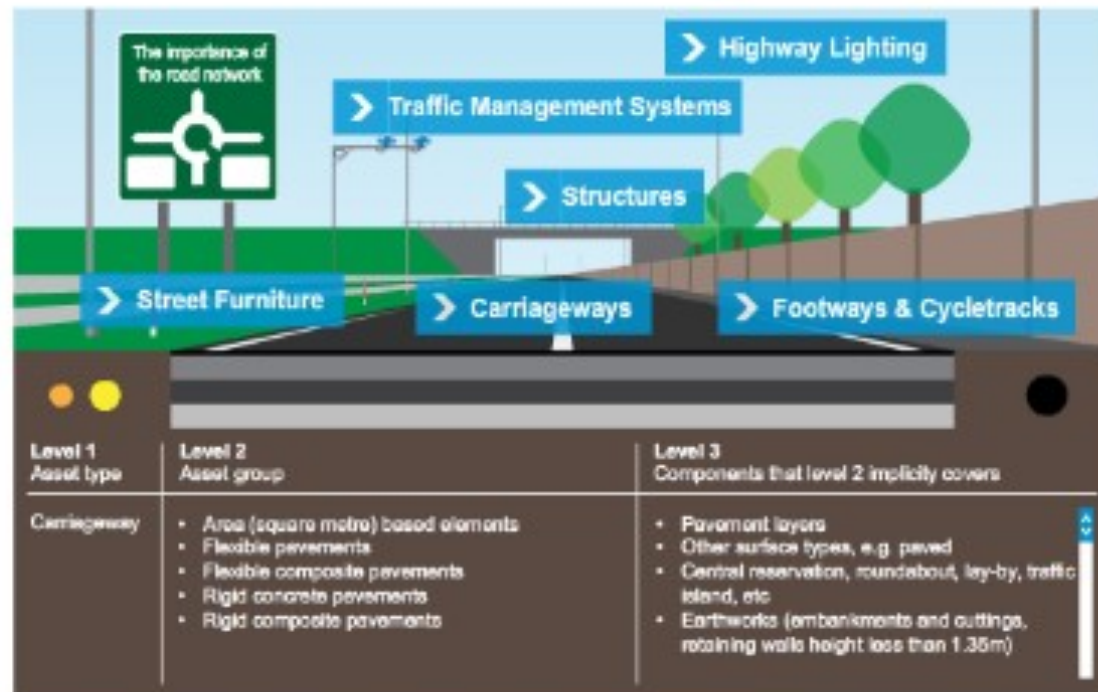
The LHN:

> Is made up of many different assets

> The number of these assets is diverse

LHAs are custodians of the LHN. Operating, maintaining and enhancing the LHN effectively is crucial to England's economic performance.

> The Code of Practice on Transport Infrastructure Assets classifies these assets as follows



Click the marked hotspots on the diagram...



# Incentive Element - Banding Results

- Results for 2018/19 Financial Year all received.
- Results show continuous improvement.
- Results demonstrates the sector embracing changes made and driving forward.
- Issued funding letters to highway authorities in England for 2018/19



# Funding Local Highway Maintenance

- Between 2016 – 2021, UK Government is making £6.2 billion of capital funding available for local highways maintenance and improving local networks.
- This includes £578 million of this amount has been set aside to **incentivise** local authorities to carry out cost effective improvements and have an up to date asset management strategy.
- And £296 million through the Pothole Action Fund between 2016 and 2021.



# Spending Review 2019





## Pothole Spotter Trial

“Pothole-Spotter is a combination of advanced and well tested technologies as well as advanced data analytics techniques that will help to identify existing potholes and developing problems.

Over time this will enable councils to better predict how and when potholes are created. Creating a proactive service delivery environment.





Department  
for Transport

# Embracing Technology to Help Maintain Roads and Resilience



# Improving Efficiencies Revised Code of Practice – Moving to Risk Based Approach

WELL-MANAGED HIGHWAY INFRASTRUCTURE:  
**A CODE OF PRACTICE**

